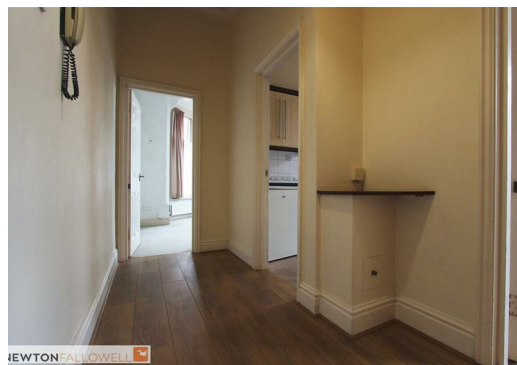
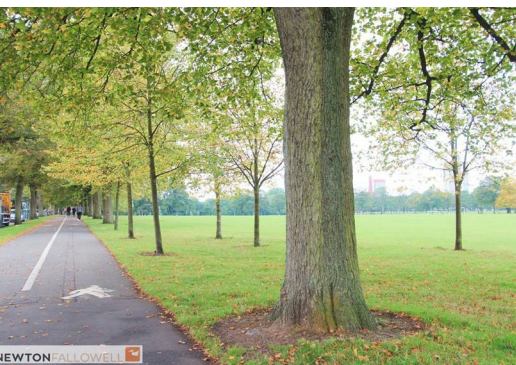




Victoria Park Road,

Leicester, Leicestershire, LE2 1XB

£525 Per Month



NEWTON FALLOWELL PRESENTS A ONE BEDROOM GROUND FLOOR FLAT LOCATED OPPOSITE VICTORIA PARK AND CLOSE TO LEICESTER CITY CENTRE. WITHIN WALKING DISTANCE OF CLARENDON PARK, this charming one bedroom flat is offered on an unfurnished basis including kitchen appliances. Benefiting from gas central heating, security cameras, includes an off-road parking space for one vehicle. The accommodation comprises of a hallway, kitchen, bedroom, lounge, and bathroom. Available now.

ACCOMMODATION

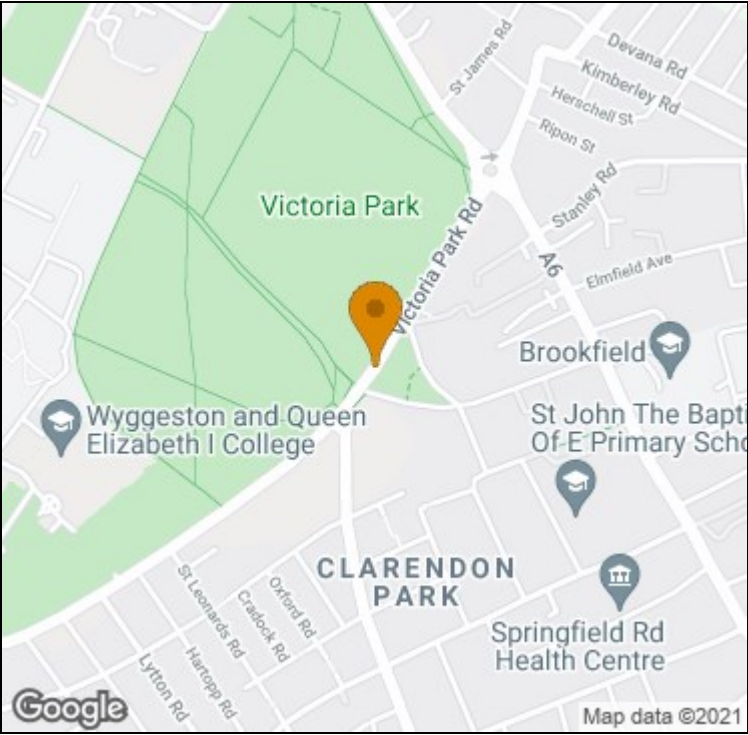
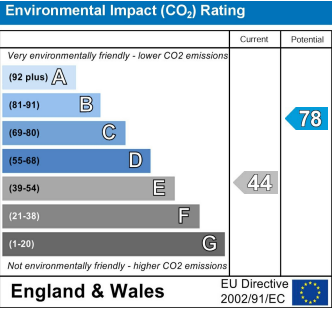
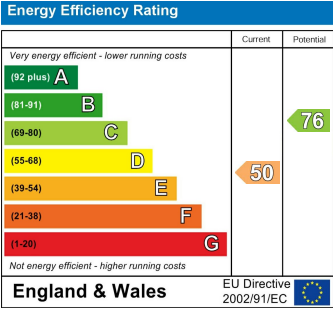
HALLWAY

RECEPTION ROOM

KITCHEN

DOUBLE BEDROOM

BATHROOM



t: 01163660990 e: oadby@newtonfallowell.co.uk
www.newtonfallowell.co.uk